



XXXII

International School of Hydraulics

28 - 31 May · 2012 · Łochów · Poland

MULTI-TEMPORAL ANALYSIS FOR MEXICO CITY AQUIFER

Gerardo Ruiz Solorio
Ma. del Rosio Ruiz Urbano



May 09, 2012



CONTENTS

- Introduction
- Background
- Hydrogeology
- Static level
- Dynamic Level
- Conclusions

Tenochtitlán, 1519



Mexico Valley and Lake, actually



13.1 km

19°31'44.85" N 99°07'01.37" O

Image © 2008 DigitalGlobe

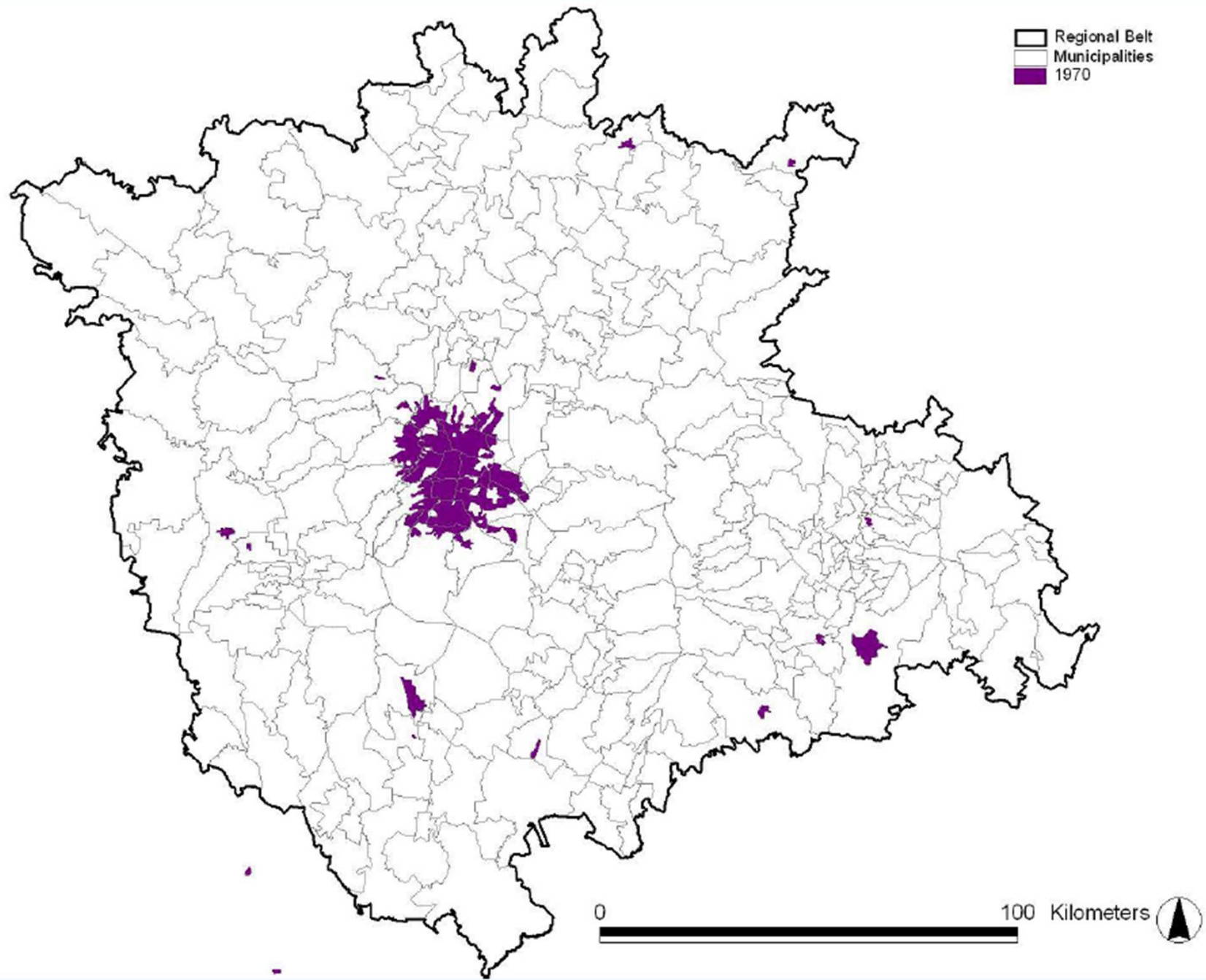
Image © 2008 GeoEye

elev. 2324 m

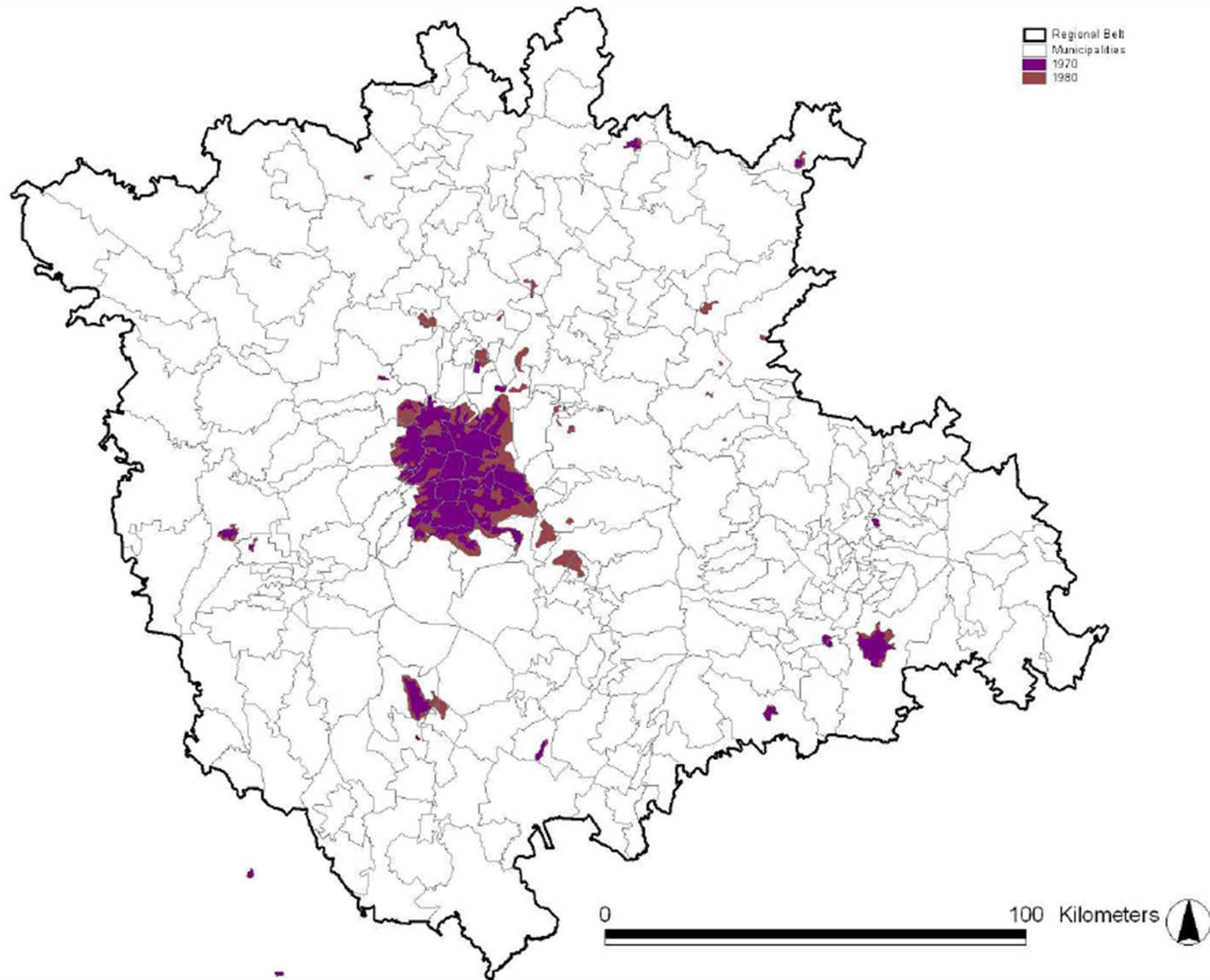
Alt. ojo 49.08 km

Google

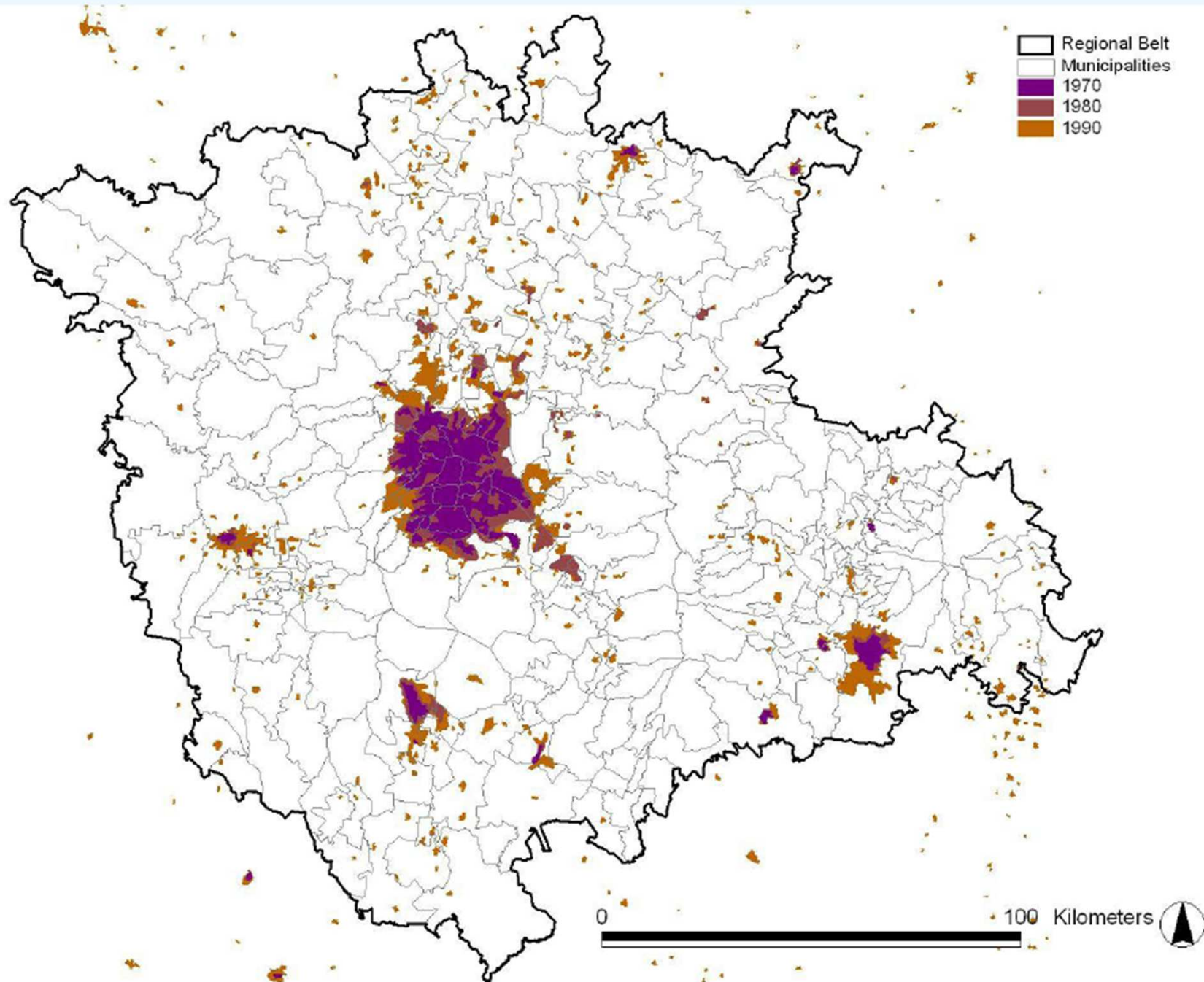
Urban expansion (1970)



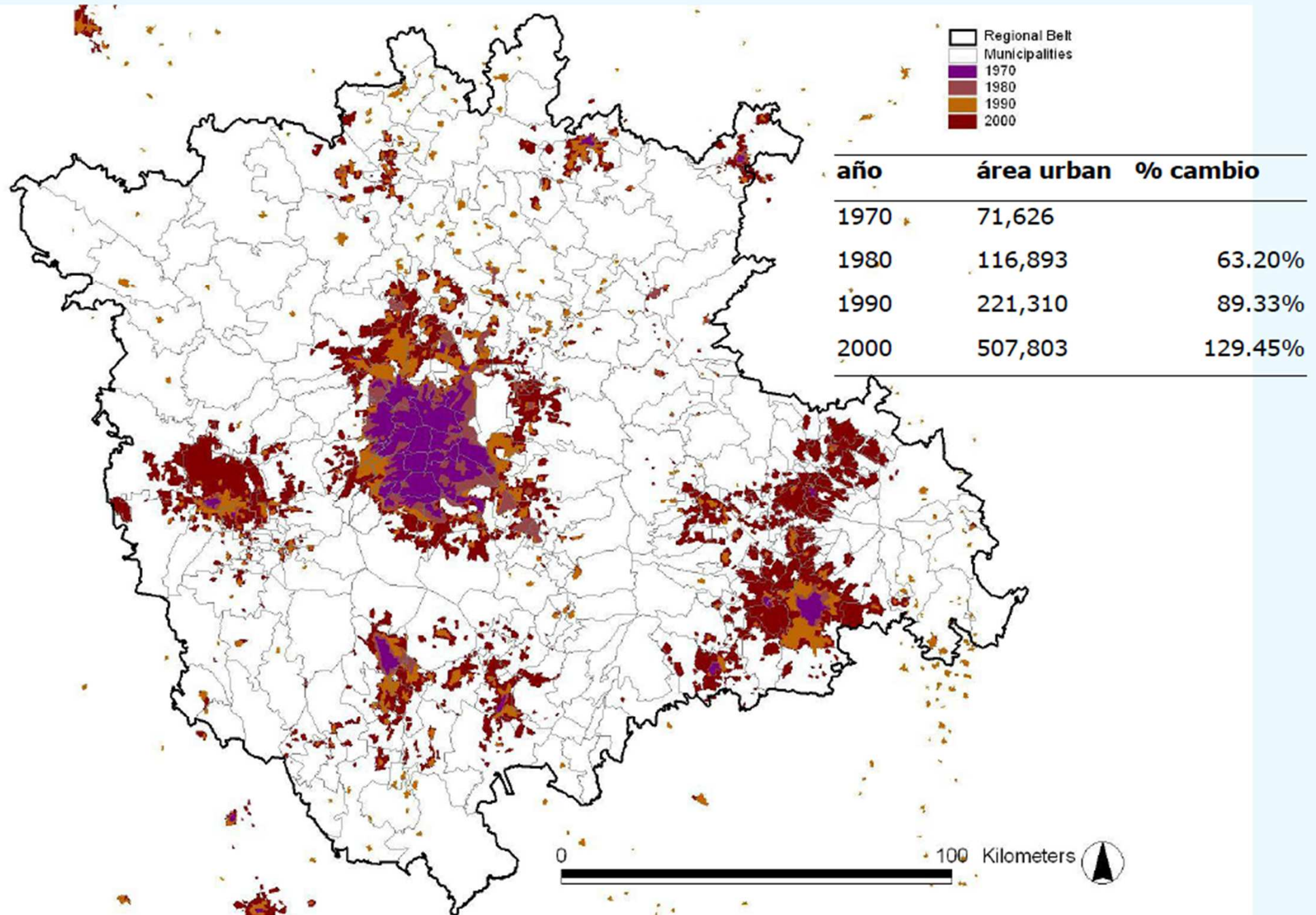
Urban expansion (1980)



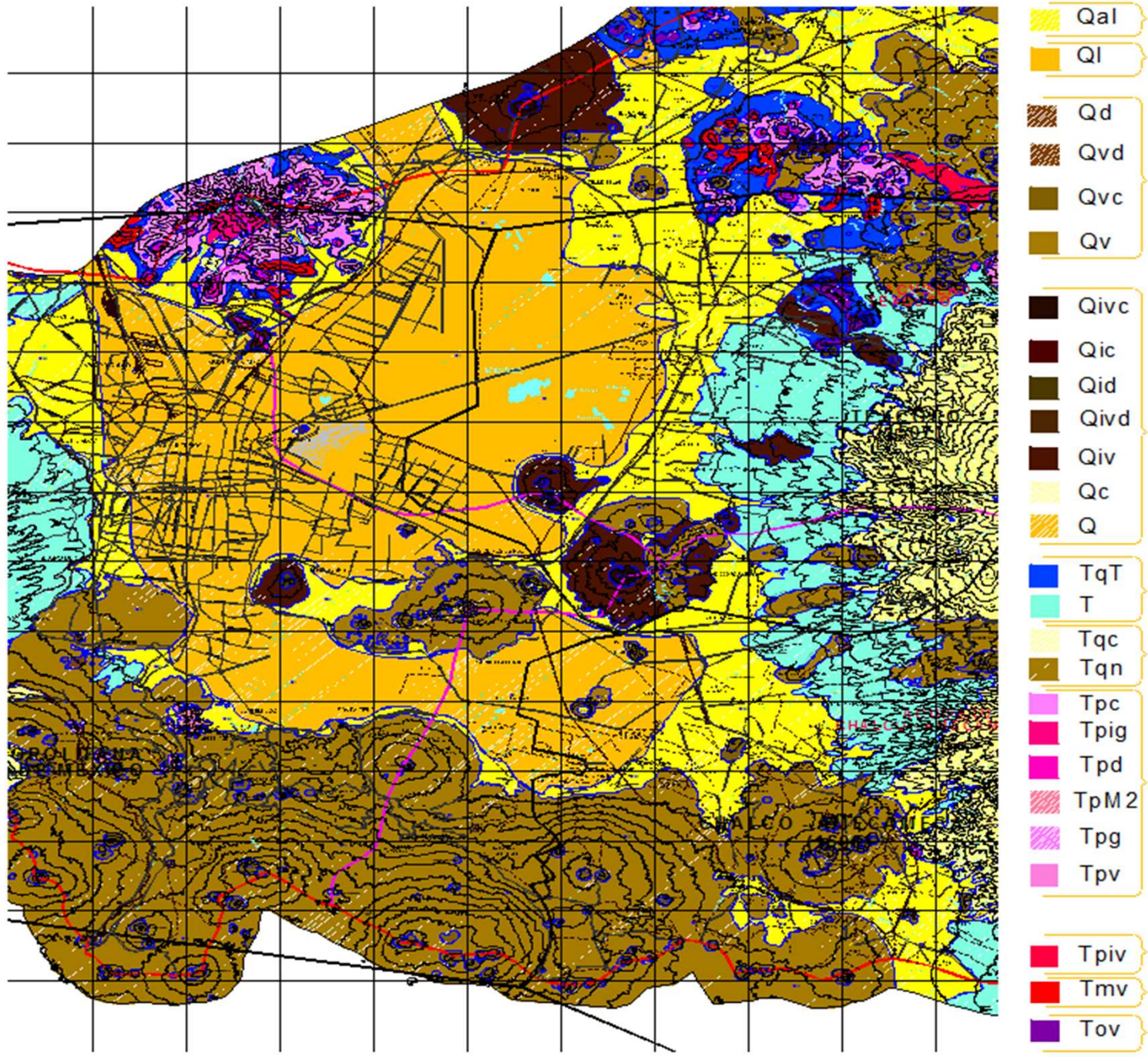
Urban expansion (1990)



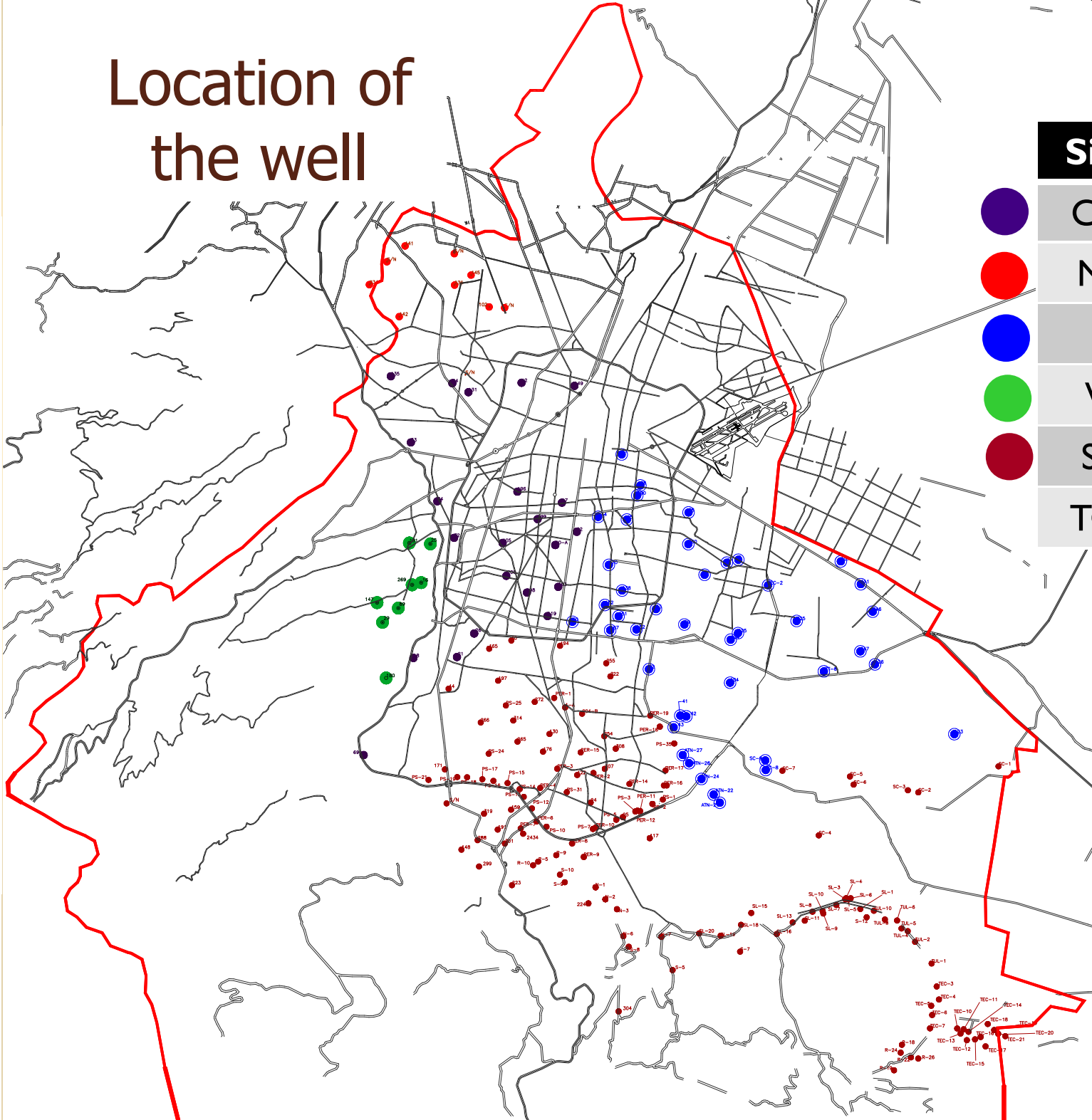
Urban expansion (2000)



Geologic zone

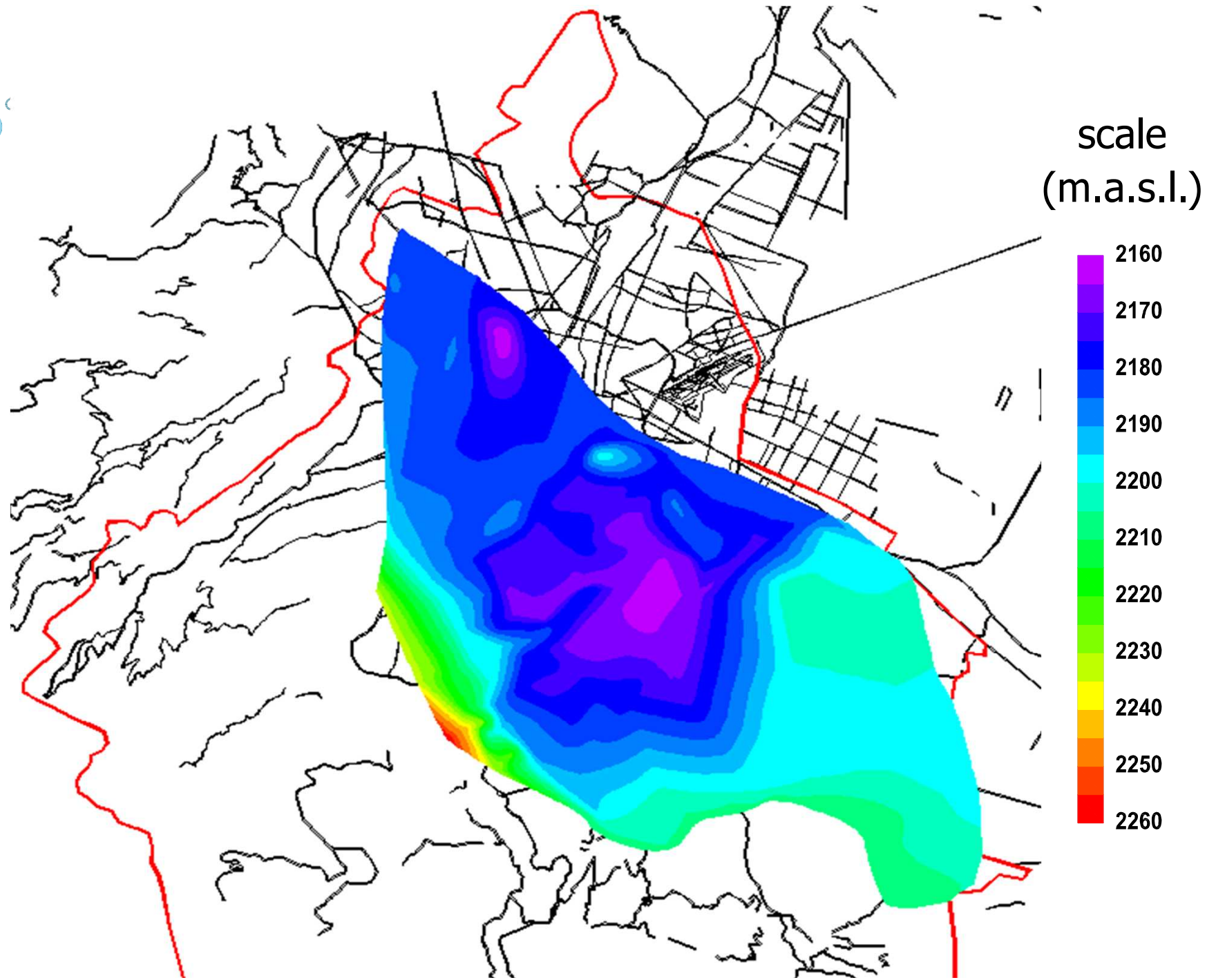


Location of the well

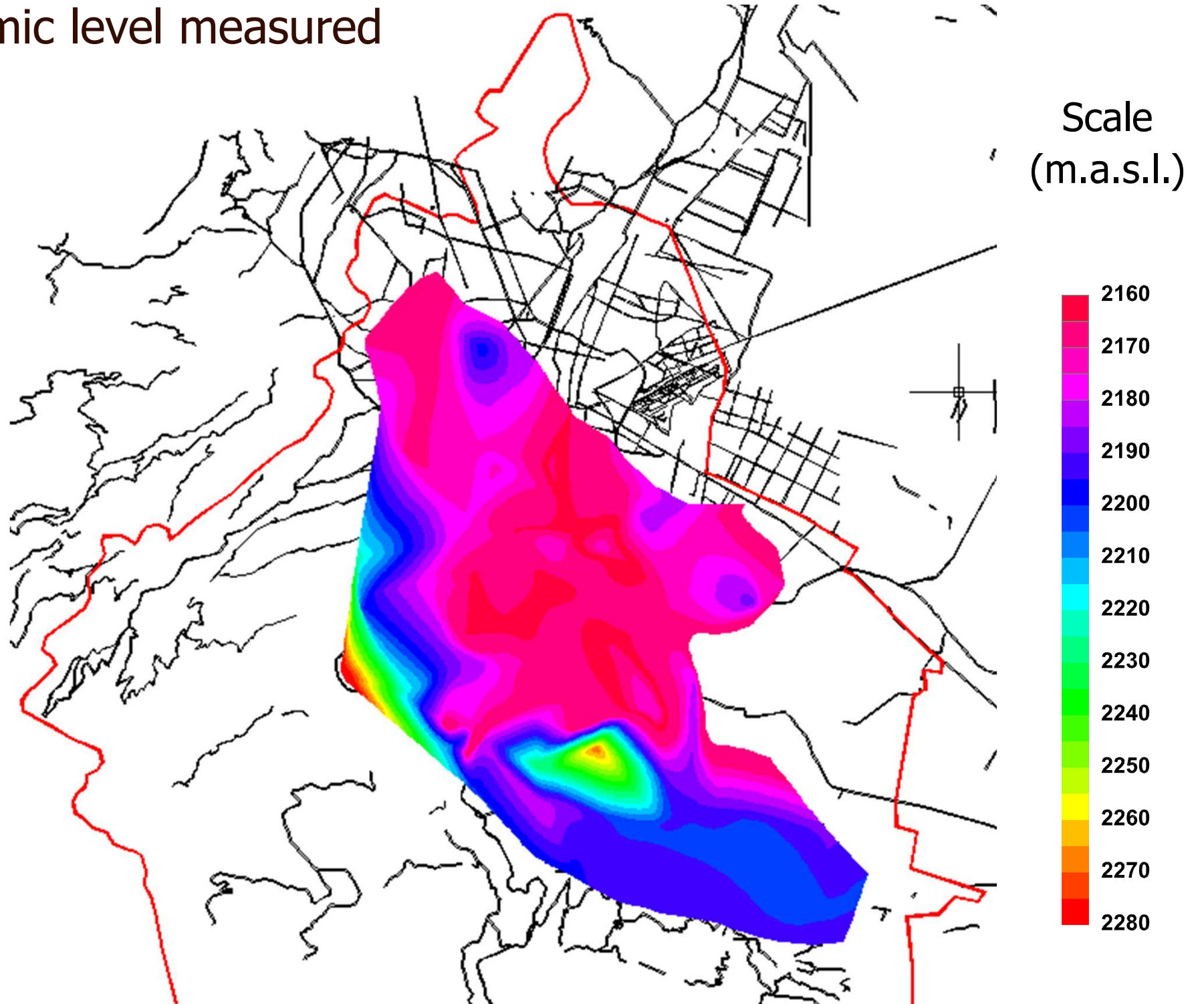


Sistem	No. of well
Center	22
North	12
East	44
West	8
South	139
TOTAL	225

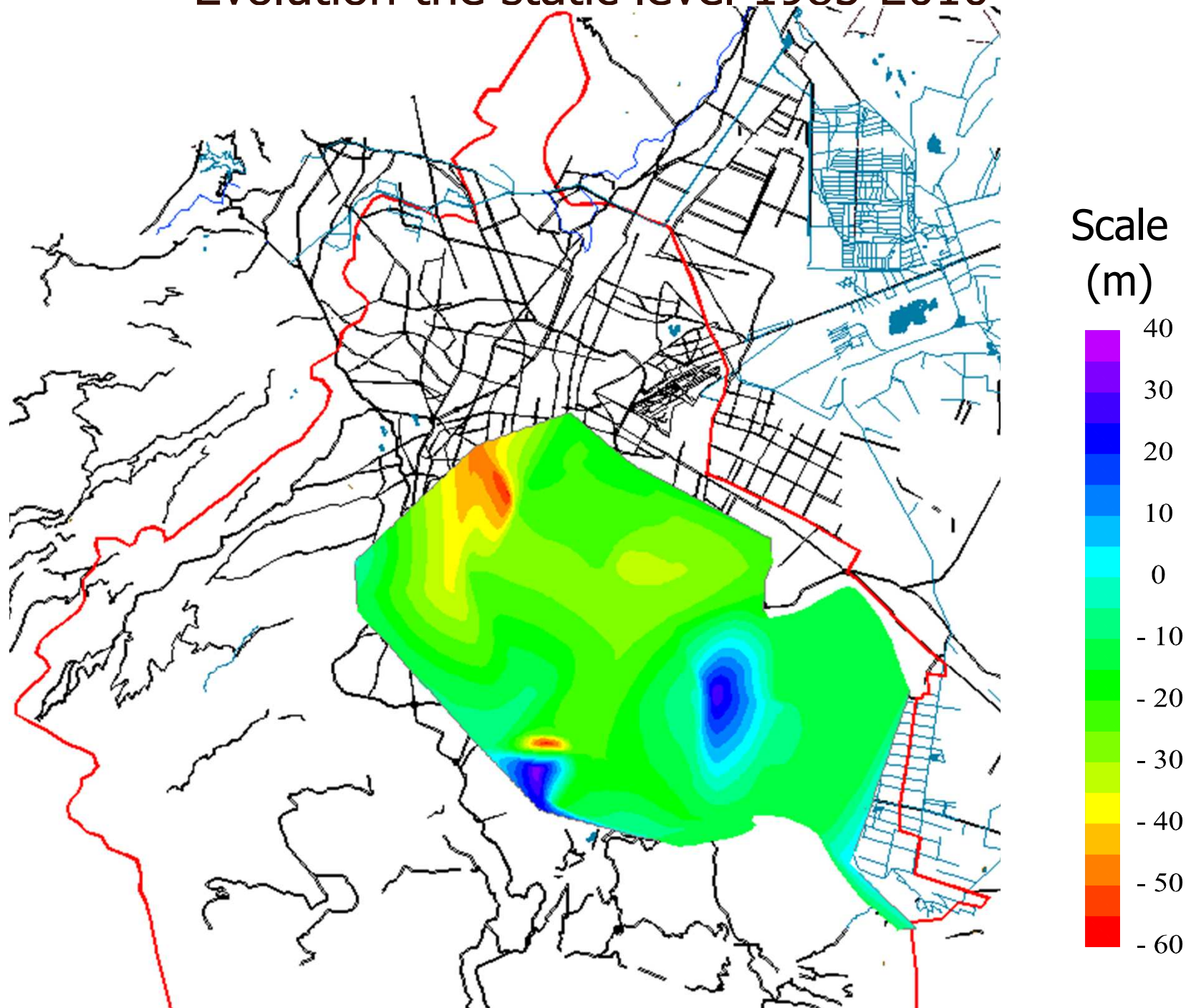
Static level measured



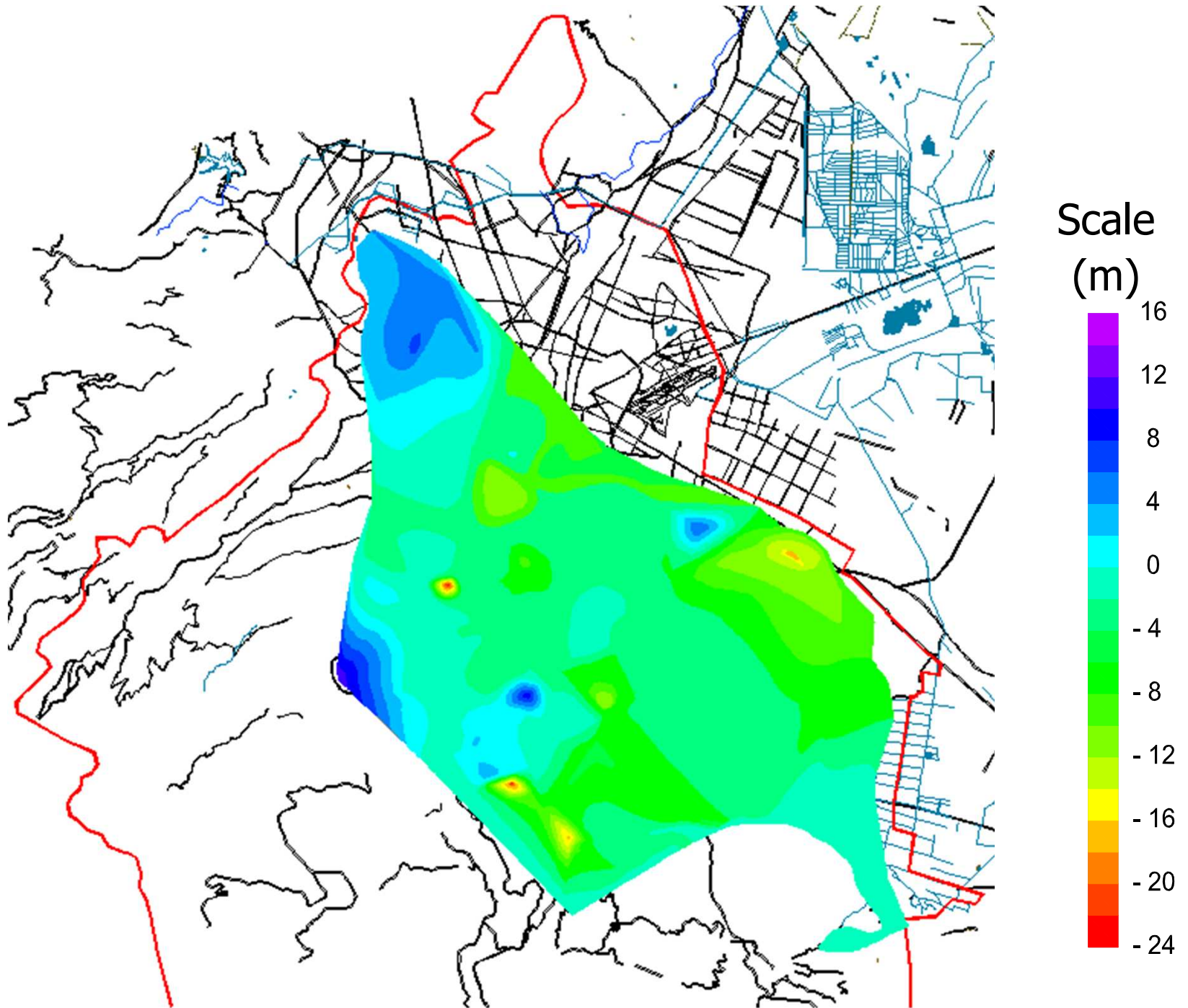
Dinamic level measured



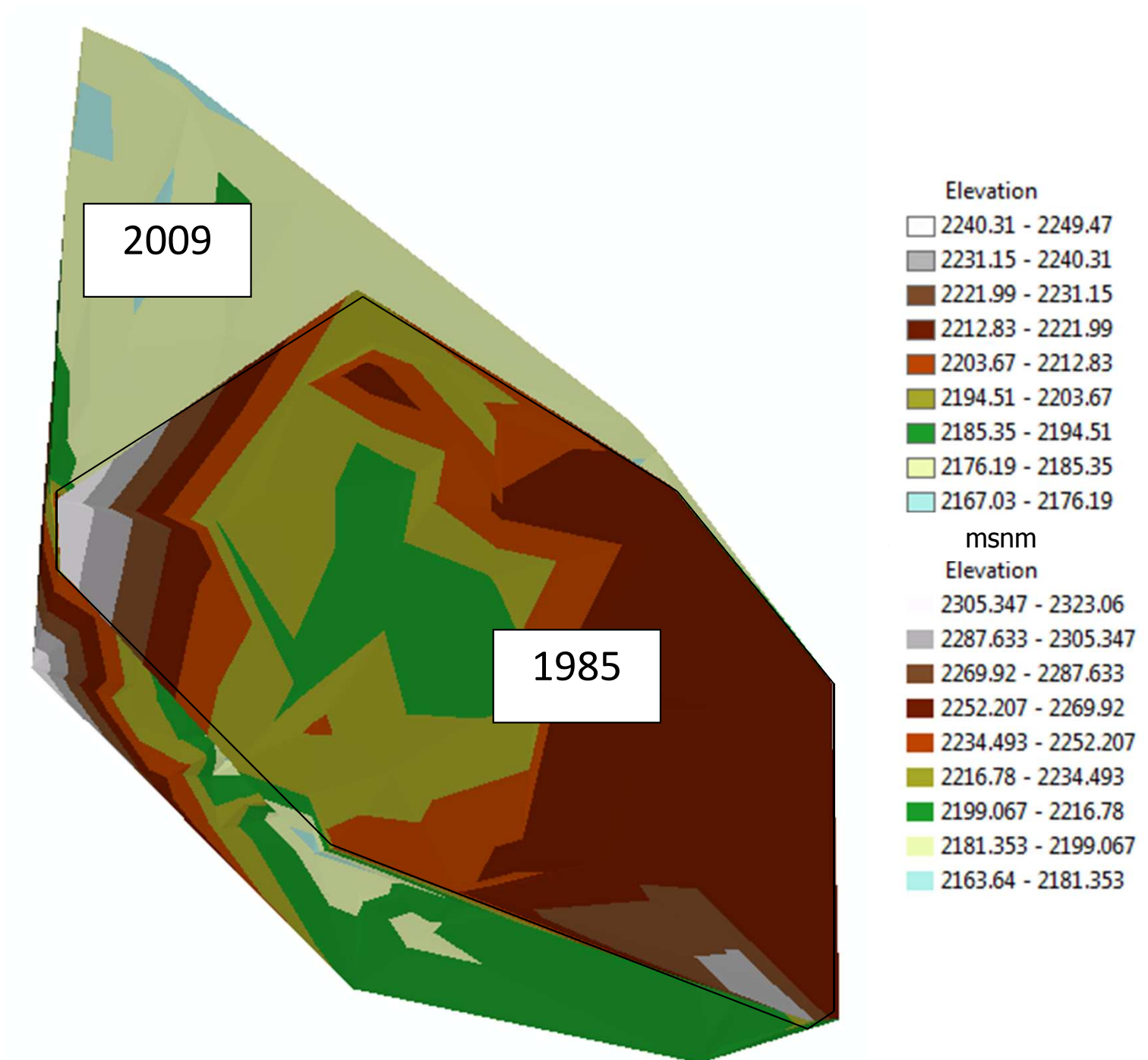
Evolution the static level 1985-2010



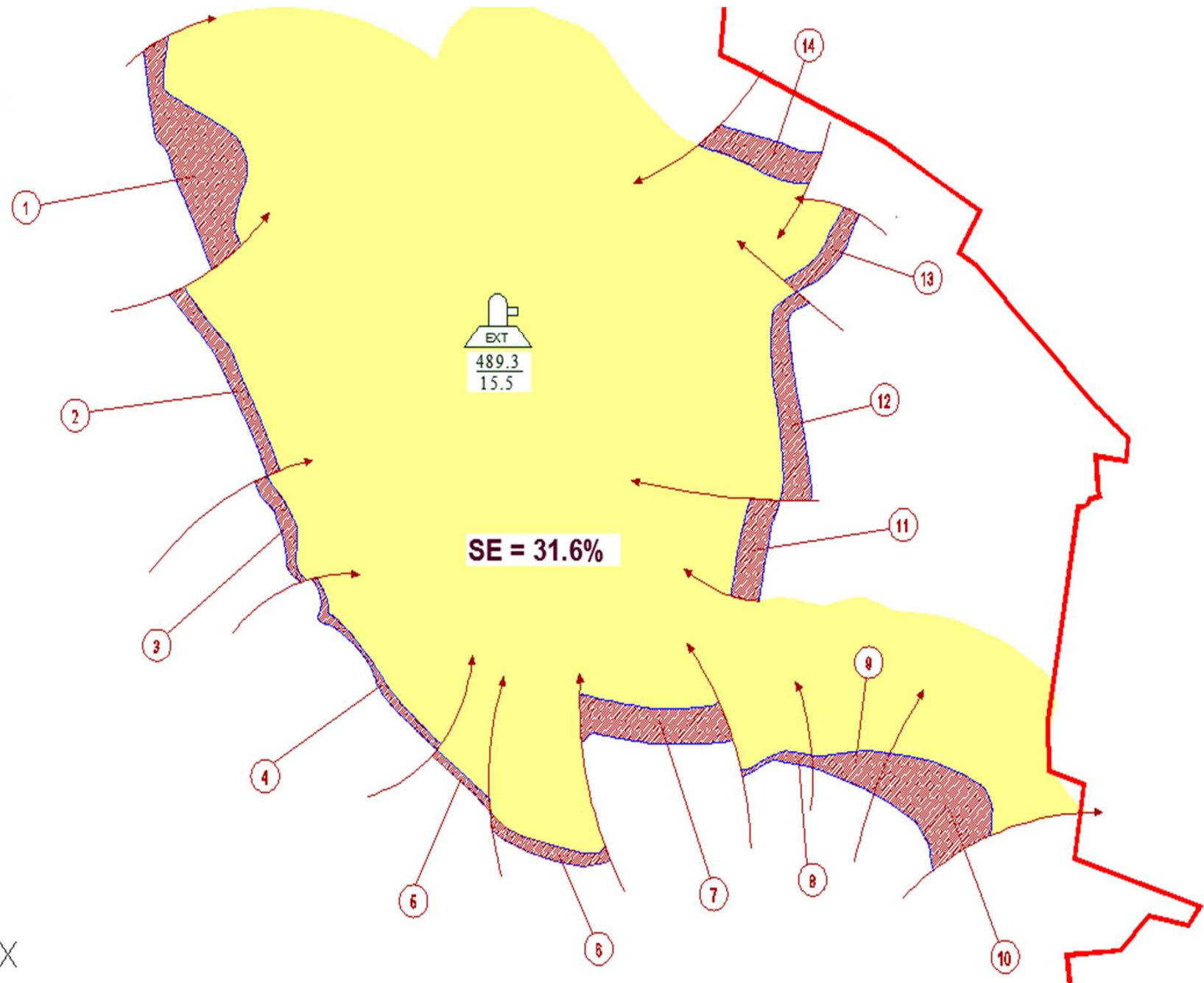
Evolution the static level 2005-2010



The total area of the static level change 1985-2009



Overexploitation the aquifer



A photograph showing two hands, one from a lighter-skinned person and one from a darker-skinned person, holding a small globe of the Earth. The globe is tilted, showing the Americas. Water is splashing around the globe, creating droplets and streaks. The background is a plain, light-colored surface.

**THANK YOU AND
WELCOME TO
MEXICO**